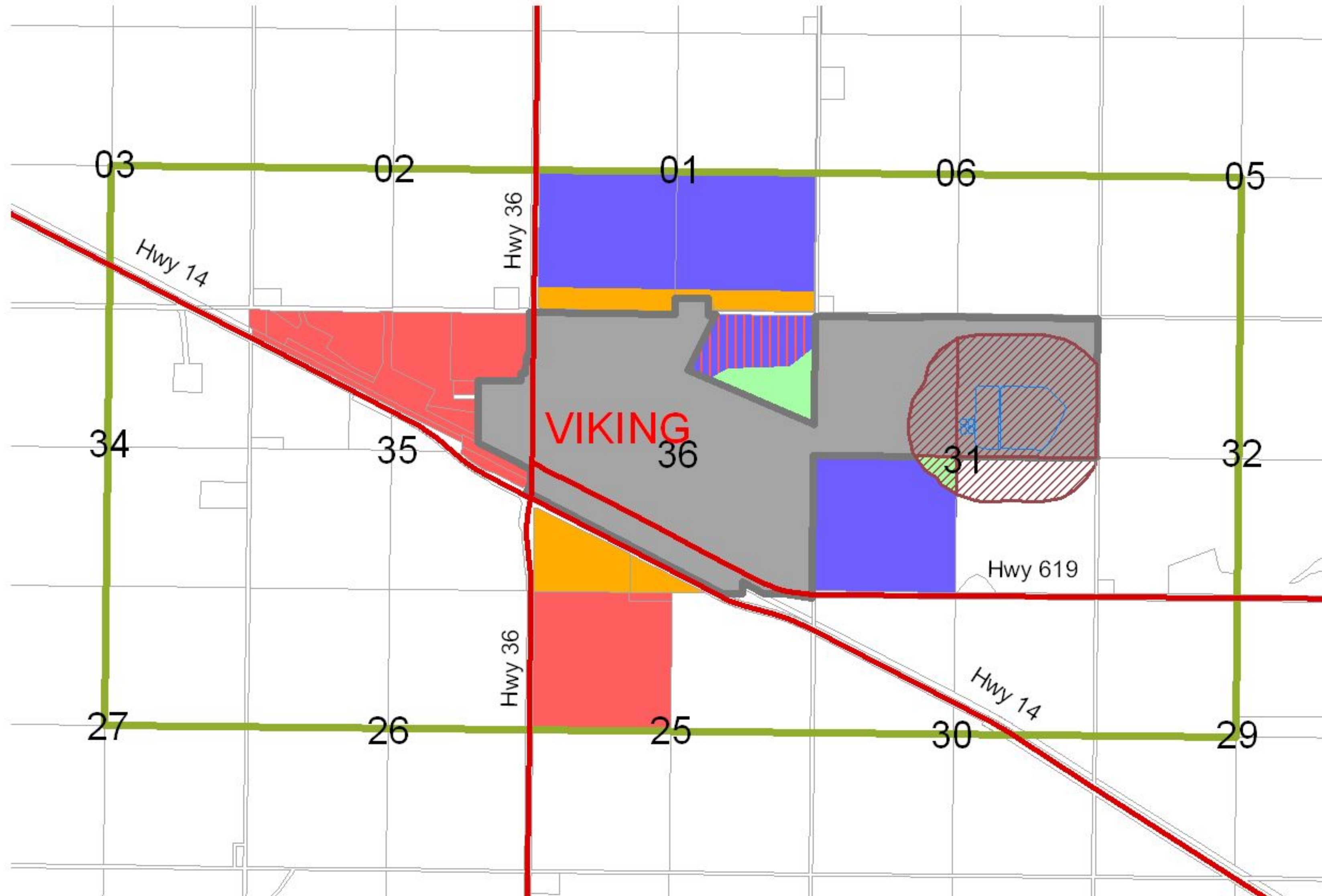


**BEAVER COUNTY  
MUNICIPAL DEVELOPMENT PLAN**

**MAP 1E - VIKING INTERMUNICIPAL  
DEVELOPMENT PLAN**



**BEAVER COUNTY**  
 BOX 140, RYLEY, AB T0B 4A0  
 Ph: 780-663-3730  
 Toll Free: 1-866-663-1333  
 EMAIL: [administration@beaver.ab.ca](mailto:administration@beaver.ab.ca)  
 Website: [www.beaver.ab.ca](http://www.beaver.ab.ca)  
 NOVEMBER 2010



**LEGEND**

- HIGHWAY
- INTERMUNICIPAL DEVELOPMENT PLAN AREA
- LAND PARCELS
- FUTURE LAND USE**
  - COMMERCIAL AREA
  - GREEN SPACE AREA
  - INDUSTRIAL AREA
  - RESIDENTIAL AREA
  - RESIDENTIAL WITH LOCAL INDUSTRY AREA
- DEVELOPMENT SETBACK**
  - LAGOON SETBACK - 300 METER
  - TOWN OF VIKING



0 1 2 Kilometers